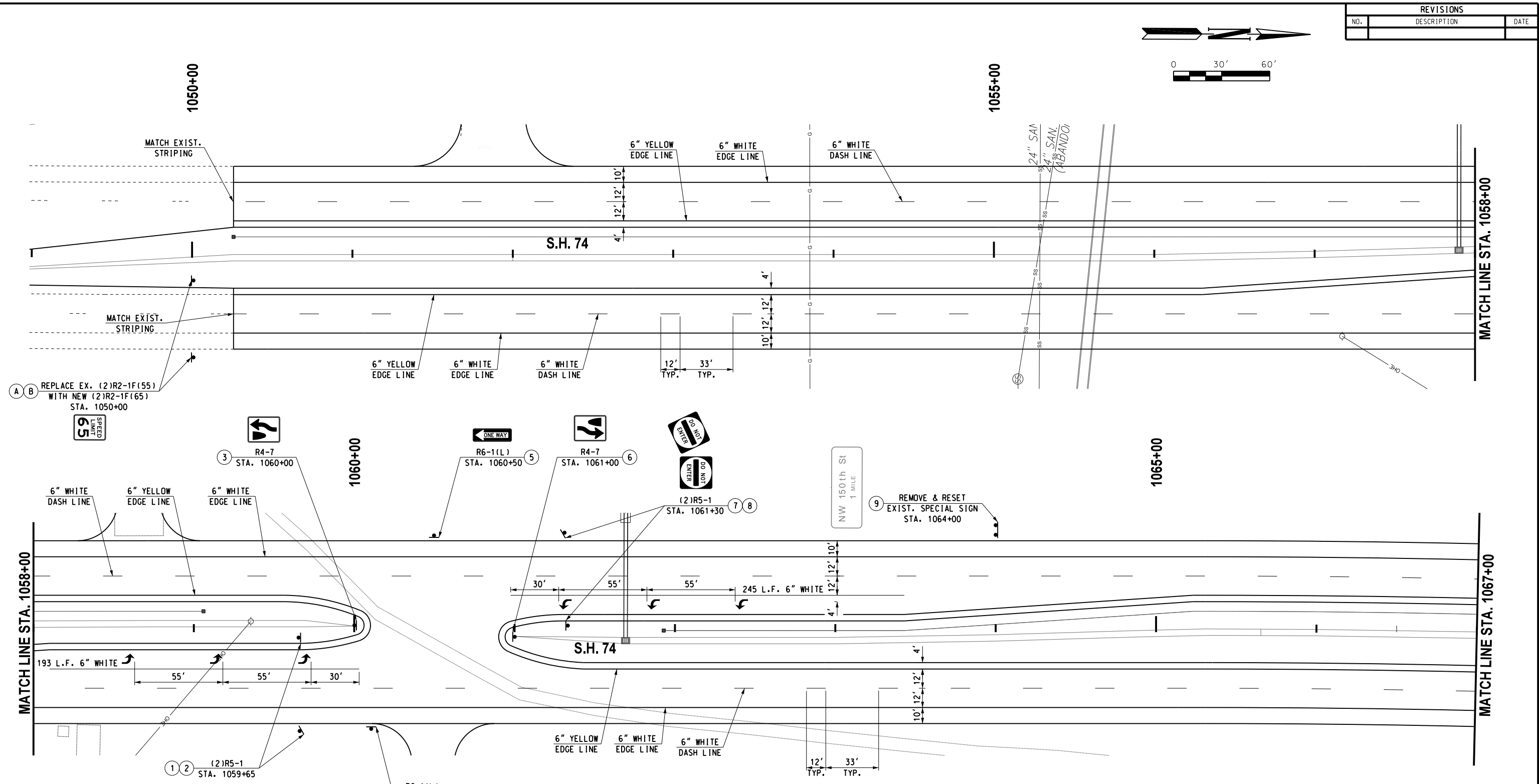
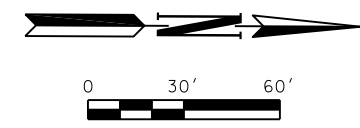


REVISIONS		
NO.	DESCRIPTION	DATE



(A) (B) REPLACE EX. (2)R2-1F(55) WITH NEW (2)R2-1F(65) STA. 1050+00



(9) REMOVE & RESET EXIST. SPECIAL SIGN STA. 1064+00

MATCH LINE STA. 1058+00

MATCH LINE STA. 1067+00

DESCRIPTION	UNIT	TOTALS
TRAFFIC STRIPE (PLASTIC) 4" WHITE	L.F.	0
TRAFFIC STRIPE (PLASTIC) 4" YELLOW	L.F.	0
TRAFFIC STRIPE (PLASTIC) 6" WHITE	L.F.	4725
TRAFFIC STRIPE (PLASTIC) 6" YELLOW	L.F.	3400
TRAFFIC STRIPE (PLASTIC) 6" BLACK	L.F.	0
TRAFFIC STRIPE (PLASTIC) 8" WHITE	L.F.	0
TRAFFIC STRIPE (PLASTIC) 8" YELLOW	L.F.	0
TRAFFIC STRIPE (PLASTIC) 12" WHITE	L.F.	0
TRAFFIC STRIPE (PLASTIC) 12" YELLOW	L.F.	0
TRAFFIC STRIPE (PLASTIC) 24" WHITE	L.F.	0
TRAFFIC STRIPE (PLASTIC) ARROWS	EA.	6
TRAFFIC STRIPE (PLASTIC) WORDS	EA.	0
TRAFFIC STRIPE (PLASTIC) SYMBOLS	EA.	0

Design	RWR	08/10/17
Drawn	CCC	08/10/17



SIGNING & STRIPING
S.H. 74 (SHEET 1 OF 10)
STA. 1050+00 TO 1067+00

State Job No. 14964(08) Sheet No. 113